

STAIN REMOVAL

SPOT TREAT STAINS BEFORE WASHING

- Spot treat with **Laundry Bar** and **Stain Remover** then wash as normal
- Wet soap and lather against clothes.
- For maximum stain removal, lather on both sides of stained fabric prior to washing



PRE-SOAK (IF HEAVILY SOILED) - COLOR-SAFE

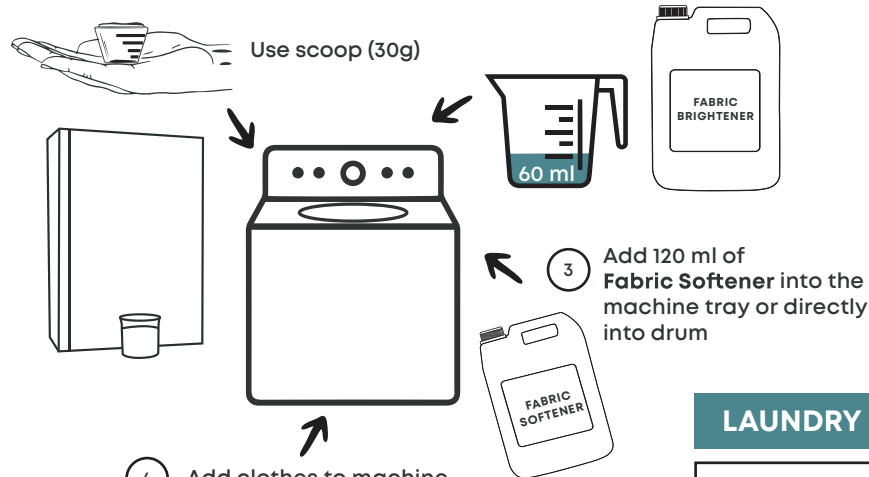
- Add 1L of **Fabric Brightener** for every 10L of water
- Soak overnight (12 Hours)
- Use gloves
- Wash as normal



MACHINE WASH

Medium Load (6-10 kg)

- 1 Add a scoop (30g) of **Laundry Powder** into the machine tray or directly into drum
- 2 Add 60ml color-safe **Brightener** into the machine tray or directly into drum
- 3 Add 120 ml of **Fabric Softener** into the machine tray or directly into drum
- 4 Add clothes to machine

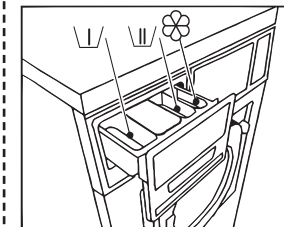


MACHINE LAUNDRY GUIDE WITH FABRIC BRIGHTENER

MACHINE GUIDE

If Laundry Powder sticks to the tray, pour warm water or add directly to drum.

Washing machines may differ. Follow your machine's guidelines.



Laundry Powder

Fabric Brightener / OxyBoost

Fabric Softener

LAUNDRY DOSAGE

Machine Load Size	Powder Measurements	Brightener Measurements	Softener Measurements
6 - 10kg	30g	60ml	120ml
10 - 15kg	60g	120ml	240ml
16+kg	90g	90g	480ml

HANG AND FRESHEN

- Hang clothes to dry
- Spray **Freshening Spray** for light fragrance



TIPS

- Do maintenance on your machine every 6 months
- Clean inner rubber parts of machine door regularly
- Separate colors & whites to prevent bleeding
- Treat stains as early as possible
- Use gloves when using Fabric Brightener